

# GIWW - CHARLOTTE COUNTY, FLORIDA CUTS C-1 THRU C-9 PROJECT CONDITION SURVEY FY20 9-FOOT PROJECT

### SURVEY NOTES

- REFER TO SURVEY NO. 20-110.
- SOUNDINGS ARE IN FEET AND TENTHS AND REFER TO NOAA'S REPORTED MEAN LOWER LOW WATER (MLLW) OF THE 1983-2001 TIDAL EPOCH.
- TIDAL REDUCTIONS WERE OBTAINED UTILIZING A REAL-TIME KINEMATIC (RTK) GPS AND REFERENCED TO MLLW UTILIZING A HYPERKINEMATIC TIDE DATUM (KTD) MODEL. KTD FILE NAME IS: "SPC-FL-WEST-2010-12-07.KTD".
- ALL ELEVATIONS ARE BELOW THE CHART DATUM UNLESS PRECEDED BY A (+) SIGN.
- PLANE COORDINATES ARE BASED ON THE TRANSVERSE MERCATOR PROJECTION FOR THE WEST ZONE OF FLORIDA AND REFERENCED TO NORTH AMERICAN DATUM OF 1983 (NAD83).
- ALL STATIONING REFERS TO THE CENTERLINE OF THE CHANNEL.
- THIS SURVEY WAS PERFORMED USING FLORIDA PERMANENT REFERENCE NETWORK (NTRIP) FOR REAL-TIME KINEMATIC (RTK) GPS POSITIONING FOR THE ENTIRE PROJECT.
- DEPTHS DEPICTED BY THIS SURVEY ARE REFERENCED TO MLLW, TIDAL EPOCH 1983-2001 AS REPORTED BY THE NATIONAL OCEANIC AND ATMOSPHERIC ADMINISTRATION (NOAA). NOAA'S DATUM MODEL WAS USED AND CALIBRATED TO THE PUBLISHED MLLW HEIGHTS OF THE BENCHMARKS ASSOCIATED WITH THE TIDE GAGE SITES SPECIFIED BELOW:  
NOAA TIDAL STATION 872 5685 USED FOR CUTS C-1-C9. (PID: DM3213)  
VERTICAL MEASUREMENTS WERE MADE USING AN EDGETECH 6205 COMBINED MULTIBEAM AND SIDESCAN. ALL SOUNDINGS SHOWN ARE IN HIGH FREQUENCY.
- VESEL: SB-44      DATE OF SURVEY: 22-23 SEP 2020      CUT: C-1 THRU C-9
- AIDS TO NAVIGATION WERE LOCATED DURING THIS SURVEY.
- THE INFORMATION DEPICTED ON THIS MAP REPRESENTS THE RESULTS OF SURVEYS MADE ON THE DATES INDICATED ABOVE AND CAN ONLY BE CONSIDERED AS INDICATING THE GENERAL CONDITIONS AT THAT TIME. THIS CHART IS SOLELY FOR THE DISTRIBUTION OF AVAILABLE DEPTHS AT THE TIME OF THE SURVEY.
- SURVEY ACCURACY PERFORMANCE STANDARDS, QUALITY CONTROL, AND QUALITY ASSURANCE REQUIREMENTS WERE FOLLOWED DURING THIS SURVEY IN ACCORDANCE WITH USACE EM 1110-2-1003, HYDROGRAPHIC SURVEYING, 30 NOV 2013.

LEGEND	
	MONUMENT
	LIGHTED BEACON
	GREEN DAYBEACON
	RED DAYBEACON
	RED LIGHTED BUOY
	GREEN LIGHTED BUOY
	CAN BUOY
	NUN BUOY
	TIDE STAFF
	PROJECT DEPTH

US Army Corps of Engineers  
Jacksonville District  
SAFETY ON THIS JOB  
DEPENDS ON YOU

DESIGNED BY WRM	CHECKED BY GHR	DATE SEP 2020	DRAWN BY WRM	DATE SEP 2020

DEPARTMENT OF THE ARMY  
JACKSONVILLE DISTRICT, CORPS OF ENGINEERS  
JACKSONVILLE, FLORIDA

**HYDROGRAPHIC EXAM SURVEY FY20  
9-FOOT PROJECT**

Scale: AS SHOWN  
Drawing no. **G-001**  
SHEET XX OF XX

US Army Corps of Engineers  
Jacksonville District  
SAFETY ON THIS JOB  
DEPENDS ON YOU


DEPARTMENT OF THE ARMY  
JACKSONVILLE DISTRICT, CORPS OF ENGINEERS  
JACKSONVILLE, FLORIDA

Checked by: GHR
Designed by: WRM
Drawn by: WRM
File Name: 20-1104-H402_CHA.DGN
Date: SEP 2020
Drawn Date: SEP 2020

XXXXXXXXXXXXXXXXXXXX.DGN  
XXXXXXXXXXXXXXXXXXXX.DGN  
XXXXXXXXXXXXXXXXXXXX.DGN  
20-1104-H402\_CHA.DGN  
20-1104-H402\_CHA.DGN  
20-1104-H402\_CHA.DGN  
20-1104-H402\_CHA.DGN  
Reference files:  
20-1104-H402\_CHA.DGN  
File name:

GULF INTRACOSTAL WATERWAY RIVER  
CALOOCHEE COUNTY, FLORIDA  
**HYDROGRAPHIC EXAM SURVEY FY20**  
**9-FOOT PROJECT**  
**PLAN**  
STA. 99+00 CUT L-22 THRU STA. 2+00 CUT C-1

Scale: AS SHOWN  
Drawing no.  
**2**  
SHEET 02 OF 48

Gasparilla Sound

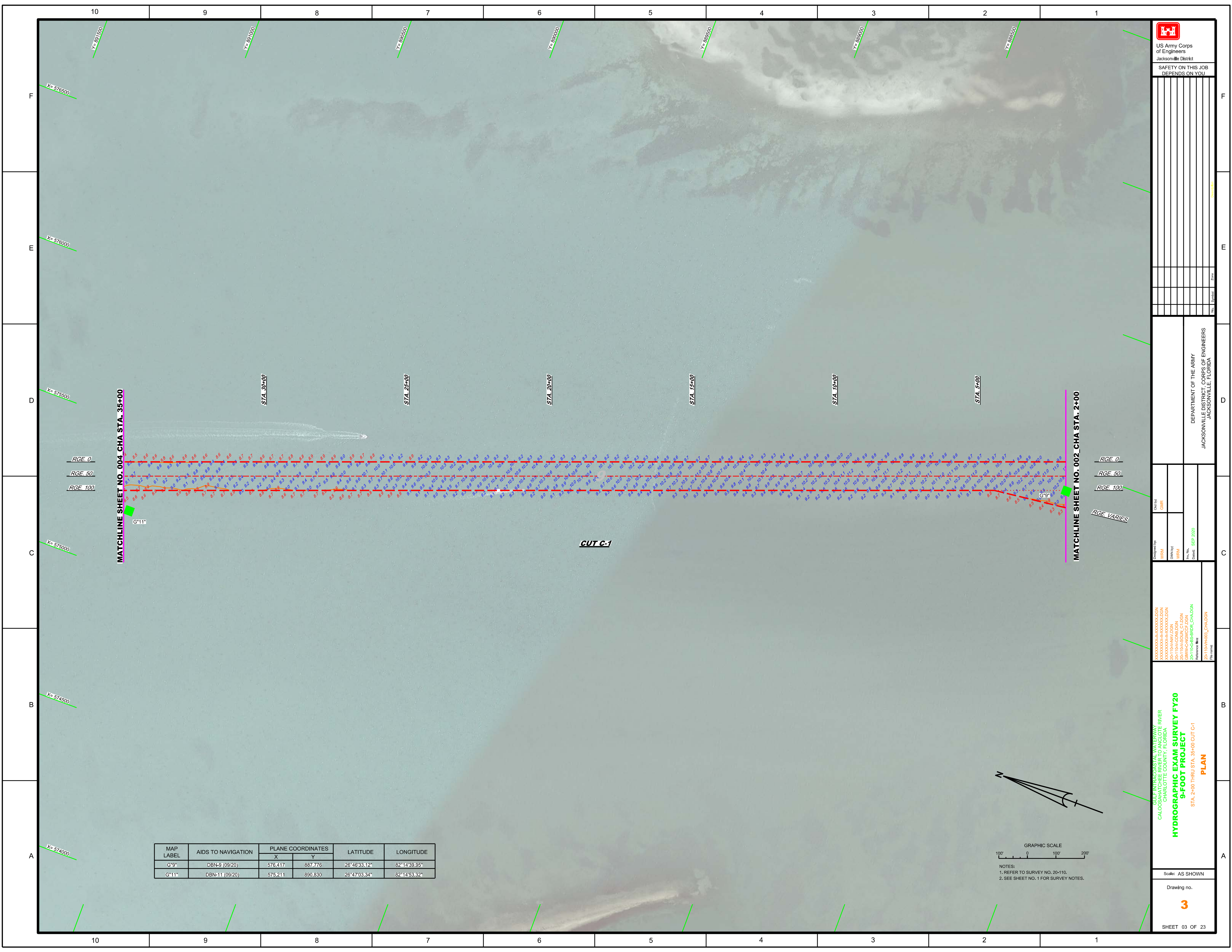
Three Sisters Island



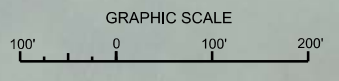
MAP LABEL	AIDS TO NAVIGATION	PLANE COORDINATES		LATITUDE	LONGITUDE
		X	Y		
R*8"	L*8 (09/20)	576.641	887.697	26°40'32.85"	82°14'37.47"
G*9"	DBN-9 (09/20)	576.417	887.776	26°40'33.12"	82°14'39.95"

GRAPHIC SCALE  
0 100' 200'  
NOTES:  
1. REFER TO SURVEY NO. 20-110.  
2. SEE SHEET NO. 1 FOR SURVEY NOTES.





MAP LABEL	AIDS TO NAVIGATION	PLANE COORDINATES		LATITUDE	LONGITUDE
		X	Y		
G*9	DBN-9 (09/20)	576,417	887,776	26°46'33.12"	82°14'39.95"
G*11	DBN-11 (09/20)	575,211	890,830	26°47'03.34"	82°14'53.32"



NOTES:  
 1. REFER TO SURVEY NO. 20-110.  
 2. SEE SHEET NO. 1 FOR SURVEY NOTES.


Checked by: GHR  
 Designed by: WRM  
 Drawn by: WRM  
 File Name: 20-110-GS-9-20  
 Date: 09/20/20

GULF INTRACOSTAL WATERWAY  
 CALOOCIA RIVER  
 CHARLOTTE COUNTY, FLORIDA  
**HYDROGRAPHIC EXAM SURVEY FY20**  
**9-FOOT PROJECT**  
 STA. 2+00 THRU STA. 35+00 CUT C-1  
**PLAN**

Scale: AS SHOWN

Drawing no.  
**3**

SHEET 03 OF 23


  
 US Army Corps of Engineers
   
 Jacksonville District
   
 SAFETY ON THIS JOB
   
 DEPENDS ON YOU

DEPARTMENT OF THE ARMY
   
 JACKSONVILLE DISTRICT, CORPS OF ENGINEERS
   
 JACKSONVILLE, FLORIDA

Checked by: GHR
   
 Designed by: WRM
   
 Drawn by: WRM
   
 File No: 20-110-CON/DGN
   
 Date: SEP 2020

GULF INTRACOSTAL WATERWAY
   
 CHARLOTTE COUNTY, FLORIDA
   
**HYDROGRAPHIC EXAM SURVEY FY20**
  
**9-FOOT PROJECT**
  
 STA. 35+00 THRU STA. 88+00 CUT C-1
   
**PLAN**

Scale: AS SHOWN
   
 Drawing no.
   
**4**

SHEET 04 OF 23

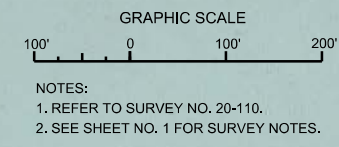
F  
E  
D  
C  
B  
A



**MATCHLINE SHEET NO. 005 CHA STA. 68+00**

**MATCHLINE SHEET NO. 003 CHA STA. 35+00**

MAP LABEL	AIDS TO NAVIGATION	PLANE COORDINATES		LATITUDE	LONGITUDE
		X	Y		
R"12"	DBN-12 (09/20)	574,369	893,698	26°47'31.73"	82°15'02.68"



*Gasparilla Sound*

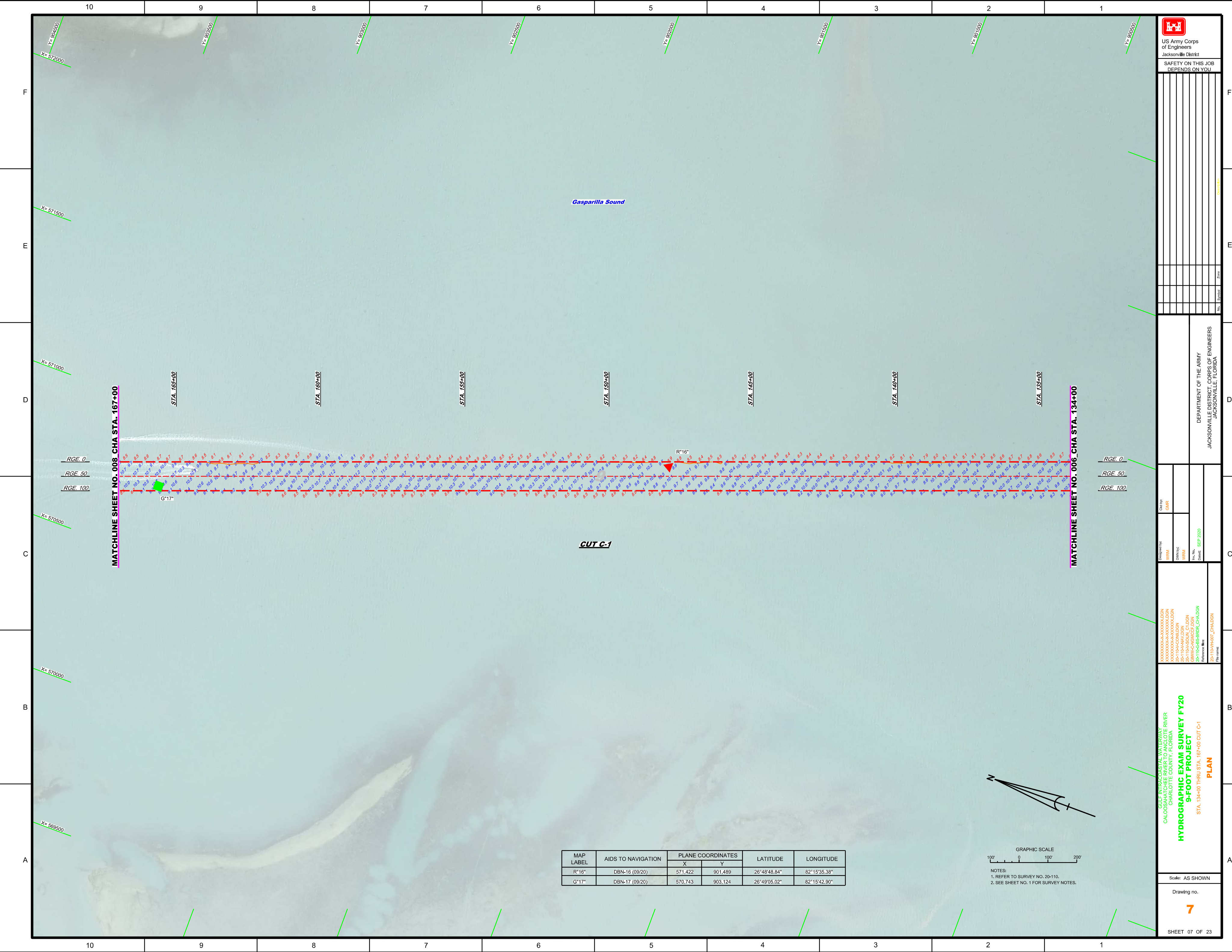
**CUT C-1**

RGE. 0  
RGE. 50  
RGE. 100

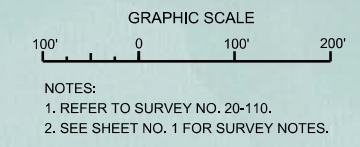
RGE. 0  
RGE. 50  
RGE. 100







MAP LABEL	AIDS TO NAVIGATION	PLANE COORDINATES		LATITUDE	LONGITUDE
		X	Y		
R*16"	DBN-18 (09/20)	571,422	901,489	26°48'48.84"	82°15'35.38"
G*17"	DBN-17 (09/20)	570,743	903,124	26°49'05.02"	82°15'42.90"



US Army Corps of Engineers  
Jacksonville District

SAFETY ON THIS JOB  
DEPENDS ON YOU

No.	Symbol	Zone

DEPARTMENT OF THE ARMY  
JACKSONVILLE DISTRICT, CORPS OF ENGINEERS  
JACKSONVILLE, FLORIDA

Matchline SHEET NO. 008 CHA STA. 167+00

MATCHLINE SHEET NO. 006 CHA STA. 134+00

RGE. 0  
RGE. 50  
RGE. 100

STA. 167+00  
STA. 166+00  
STA. 165+00  
STA. 164+00  
STA. 163+00  
STA. 162+00  
STA. 161+00  
STA. 160+00  
STA. 159+00  
STA. 158+00  
STA. 157+00  
STA. 156+00  
STA. 155+00  
STA. 154+00  
STA. 153+00  
STA. 152+00  
STA. 151+00  
STA. 150+00  
STA. 149+00  
STA. 148+00  
STA. 147+00  
STA. 146+00  
STA. 145+00  
STA. 144+00  
STA. 143+00  
STA. 142+00  
STA. 141+00  
STA. 140+00  
STA. 139+00  
STA. 138+00  
STA. 137+00  
STA. 136+00  
STA. 135+00  
STA. 134+00

GULF INTRACOSTAL WATERWAY  
CALOOCHEE RIVER  
CHARLOTTE COUNTY, FLORIDA

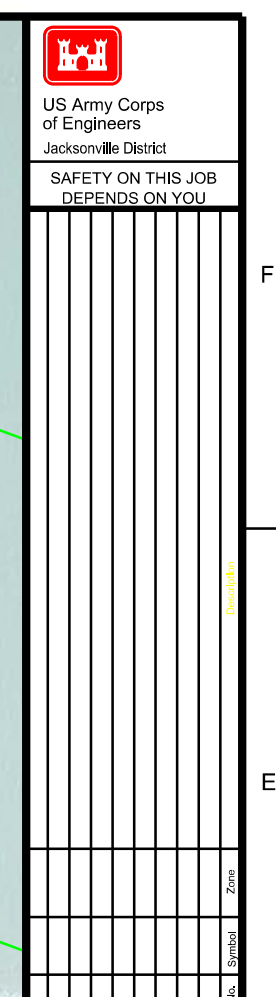
### HYDROGRAPHIC EXAM SURVEY FY20 9-FOOT PROJECT

STA. 134+00 THRU STA. 167+00 CUT C-1  
**PLAN**

Scale: AS SHOWN

Drawing no.  
**7**

SHEET 07 OF 23



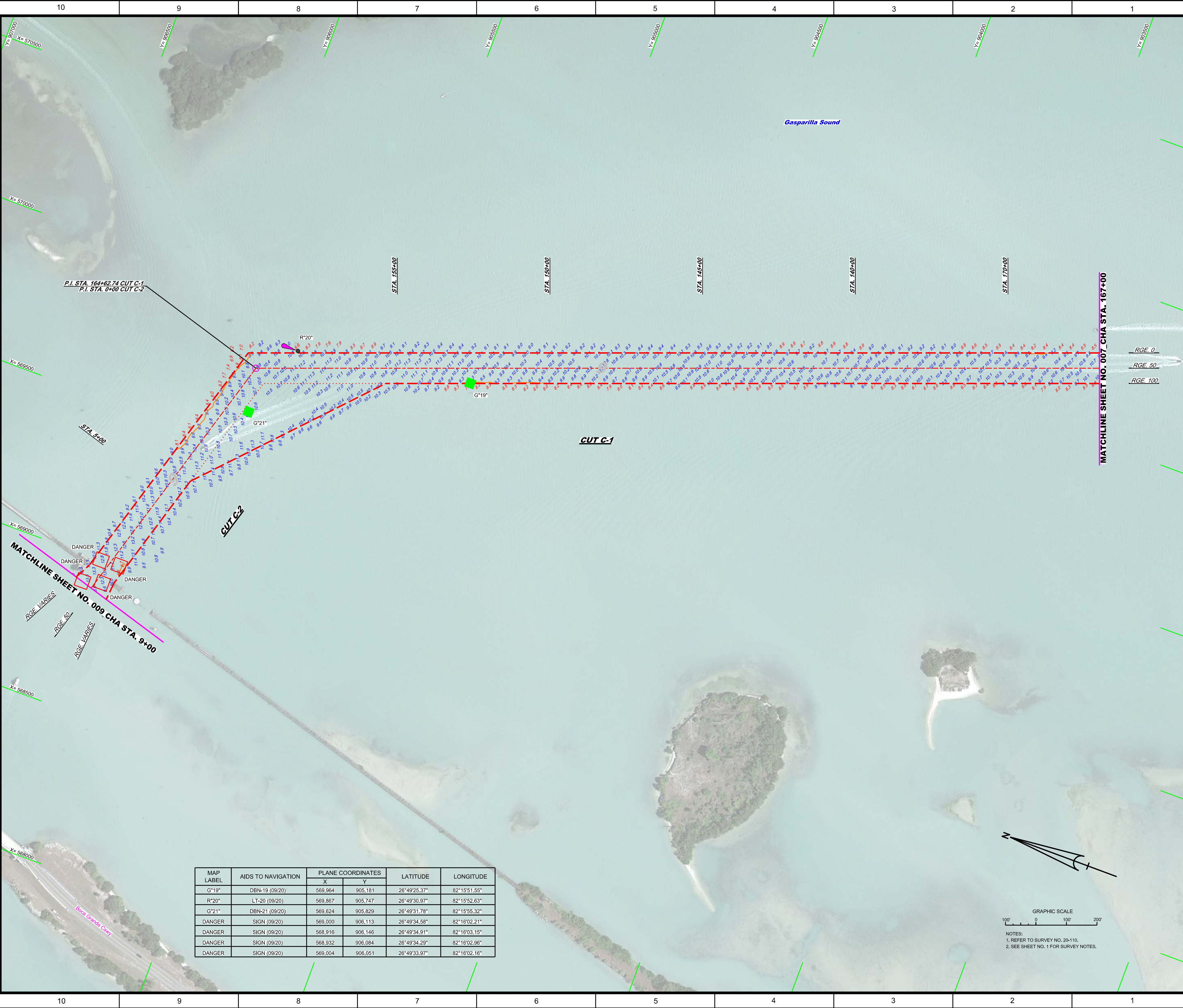
DEPARTMENT OF THE ARMY  
JACKSONVILLE DISTRICT, CORPS OF ENGINEERS  
JACKSONVILLE, FLORIDA

Checked by: GHR
Designed by: WRM
Drawn by: WRM
File Name: 20-110A-002_CHA.DGN
Date: SEP 2020

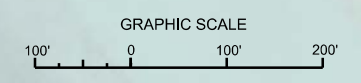
XXXXXXXXXXXXXXXXXXXX.DGN  
XXXXXXXXXXXXXXXXXXXX.DGN  
20-110A-002\_CHA.DGN  
20-110A-002\_CHA.DGN  
20-110A-002\_CHA.DGN  
20-110A-002\_CHA.DGN  
20-110A-002\_CHA.DGN

GULF INTRACOSTAL WATERWAY  
CALOOCHEE RIVER  
CHARLOTTE COUNTY, FLORIDA  
**HYDROGRAPHIC EXAM SURVEY FY20**  
**9-FOOT PROJECT**  
STA. 167+00 CUT C-1 THRU STA. 9+00 CUT C-2  
**PLAN**

Scale: AS SHOWN  
Drawing no.  
**8**  
SHEET 08 OF 23



MAP LABEL	AIDS TO NAVIGATION	PLANE COORDINATES		LATITUDE	LONGITUDE
		X	Y		
G*19"	DBN-19 (09/20)	569,964	905,181	26°49'25.37"	82°15'51.55"
R*20"	LT-20 (09/20)	569,867	905,747	26°49'30.97"	82°15'52.63"
G*21"	DBN-21 (09/20)	569,624	905,829	26°49'31.78"	82°15'55.32"
DANGER	SIGN (09/20)	569,000	906,113	26°49'34.58"	82°16'02.21"
DANGER	SIGN (09/20)	568,916	906,146	26°49'34.91"	82°16'03.15"
DANGER	SIGN (09/20)	568,932	906,084	26°49'34.29"	82°16'02.96"
DANGER	SIGN (09/20)	569,004	906,051	26°49'33.97"	82°16'02.16"



NOTES:  
1. REFER TO SURVEY NO. 20-110.  
2. SEE SHEET NO. 1 FOR SURVEY NOTES.

F  
E  
D  
C  
B  
A

10 9 8 7 6 5 4 3 2 1  
X=570500 X=570000 X=569500 X=569000 X=568500 X=568000  
Y=907000 Y=906500 Y=906000 Y=905500 Y=905000 Y=904500 Y=904000 Y=903500  
P.I. STA. 164+62.74 CUT C-1  
P.I. STA. 0+00 CUT C-2  
STA. 165+00 STA. 150+00 STA. 145+00 STA. 140+00 STA. 120+00  
STA. 5+00  
MATCHLINE SHEET NO. 007\_CHA STA. 167+00  
MATCHLINE SHEET NO. 009\_CHA STA. 9+00  
CUT C-1  
CUT C-2  
DANGER  
RGE. 0  
RGE. 50  
RGE. 100  
RGE VARIES  
RGE- 50  
RGE VARIES  
Boya Grande Cway

F  
E  
D  
C  
B  
A



US Army Corps of Engineers  
Jacksonville District  
SAFETY ON THIS JOB DEPENDS ON YOU

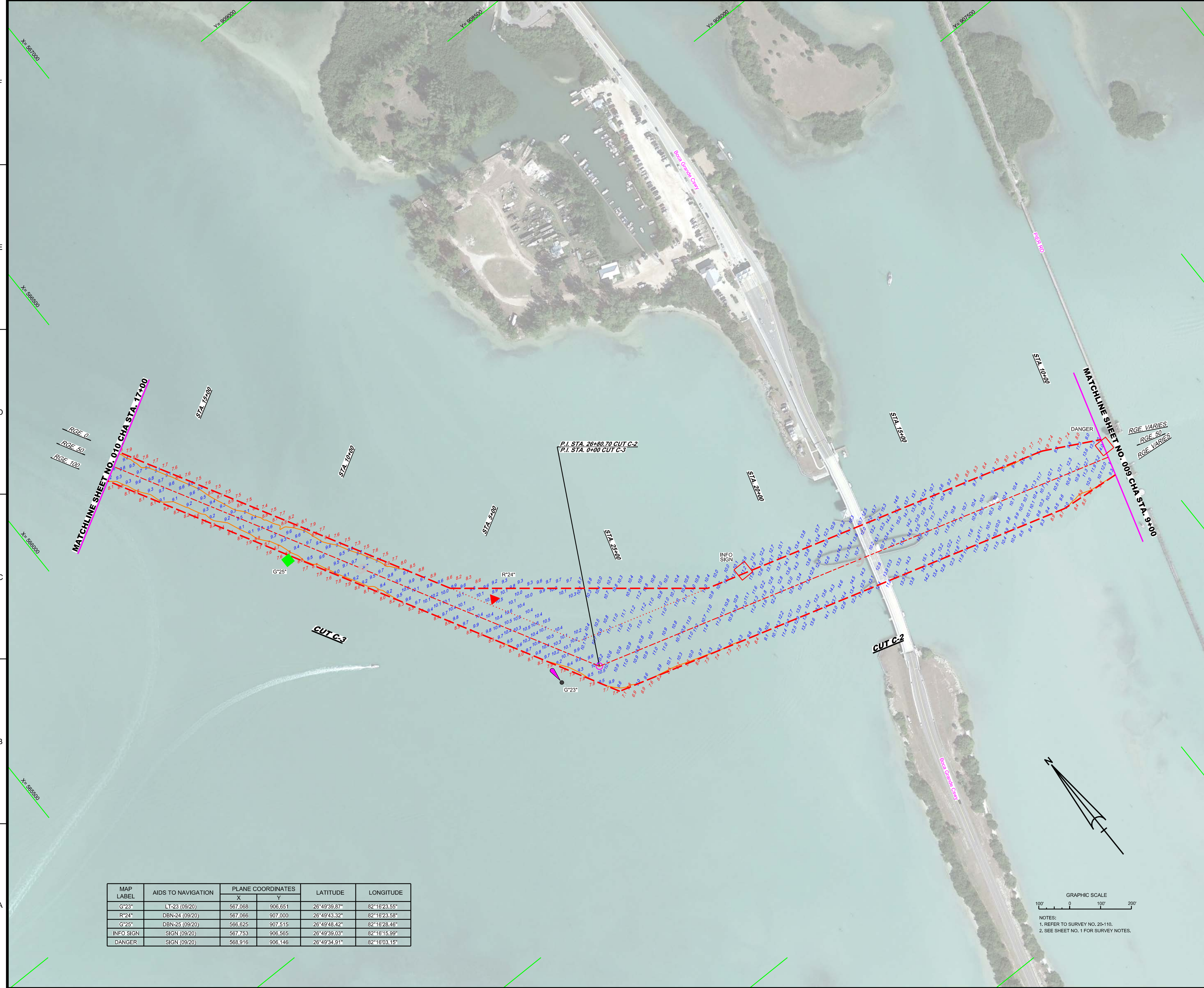

Checked by: GHR	
Designed by: WRM	
DRAWN BY: WRM	

XXXXXXXXXXXXXXXXXXXXX XXXXXXXXXXXXXXXXXXXXX XXXXXXXXXXXXXXXXXXXXX XXXXXXXXXXXXXXXXXXXXX XXXXXXXXXXXXXXXXXXXXX	XXXXXXXXXXXXXXXXXXXXX XXXXXXXXXXXXXXXXXXXXX XXXXXXXXXXXXXXXXXXXXX XXXXXXXXXXXXXXXXXXXXX	XXXXXXXXXXXXXXXXXXXXX XXXXXXXXXXXXXXXXXXXXX XXXXXXXXXXXXXXXXXXXXX XXXXXXXXXXXXXXXXXXXXX	XXXXXXXXXXXXXXXXXXXXX XXXXXXXXXXXXXXXXXXXXX XXXXXXXXXXXXXXXXXXXXX XXXXXXXXXXXXXXXXXXXXX
Reference files: 20-110V-00E2_CHA.DGN			

DEPARTMENT OF THE ARMY  
JACKSONVILLE DISTRICT, CORPS OF ENGINEERS  
JACKSONVILLE, FLORIDA

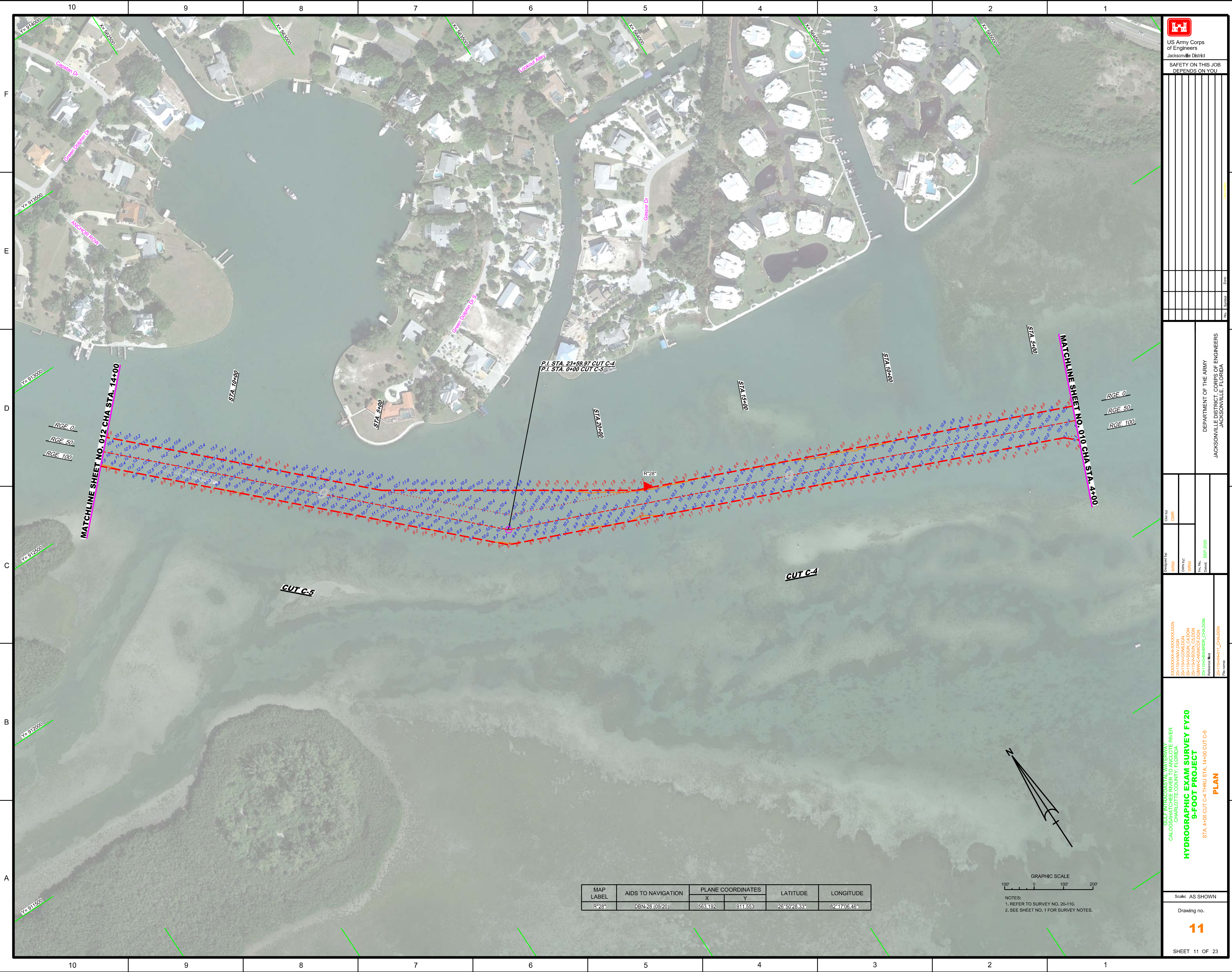
GULF INTRACOSTAL WATERWAY RIVER  
CHARLOTTE COUNTY, FLORIDA  
**HYDROGRAPHIC EXAM SURVEY FY20**  
**9-FOOT PROJECT**  
STA. 9+00 CUT C-2 THRU STA. 17+00 CUT C-3  
**PLAN**

Scale: AS SHOWN  
Drawing no. **9**  
SHEET 09 OF 23



MAP LABEL	AIDS TO NAVIGATION	PLANE COORDINATES		LATITUDE	LONGITUDE
		X	Y		
G*23*	LT-23 (09/20)	567,068	906,651	26°49'39.87"	82°16'23.55"
R*24*	DBN-24 (09/20)	567,066	907,000	26°49'43.32"	82°16'23.58"
G*25*	DBN-25 (09/20)	566,625	907,515	26°49'48.42"	82°16'28.46"
INFO SIGN	SIGN (09/20)	567,753	906,565	26°49'39.03"	82°16'15.99"
DANGER	SIGN (09/20)	568,916	906,146	26°49'34.91"	82°16'03.15"





MAP LABEL	AIDS TO NAVIGATION	PLANE COORDINATES		LATITUDE	LONGITUDE
		X	Y		
R"28"	DBN-28 (09/20)	563.192	911.553	26°50'28.33"	82°17'06.46"



NOTES:  
1. REFER TO SURVEY NO. 20-110.  
2. SEE SHEET NO. 1 FOR SURVEY NOTES.



**US Army Corps of Engineers**  
Jacksonville District

SAFETY ON THIS JOB  
DEPENDS ON YOU

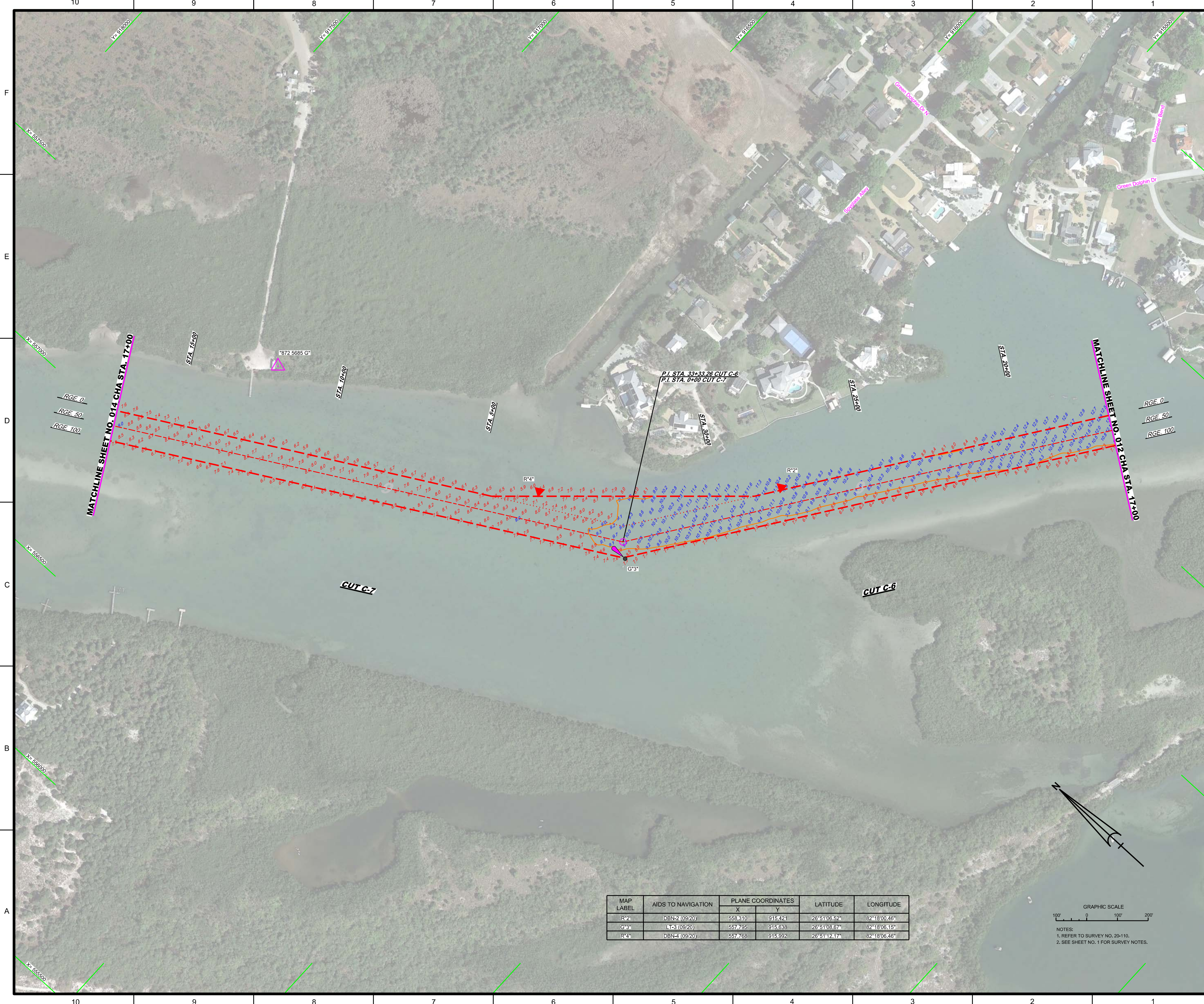
DEPARTMENT OF THE ARMY  
JACKSONVILLE DISTRICT, CORPS OF ENGINEERS  
JACKSONVILLE, FLORIDA

Checked by: GHR  
Designed by: WRM  
Drawn by: WRM  
File Name: 20-110V-H01-L-CHA.DGN  
Date: SEP 2020

XXXXXXXXXXXXXXXXXXXX.DGN  
20-110V-H01-L-CHA.DGN  
20-110V-H01-L-CHA.DGN  
20-110V-H01-L-CHA.DGN  
20-110V-H01-L-CHA.DGN  
20-110V-H01-L-CHA.DGN  
20-110V-H01-L-CHA.DGN

**HYDROGRAPHIC EXAM SURVEY FY20**  
**9-FOOT PROJECT**  
PLAN  
STA. 174+00 CUT C-6 THRU STA. 17+00 CUT C-7

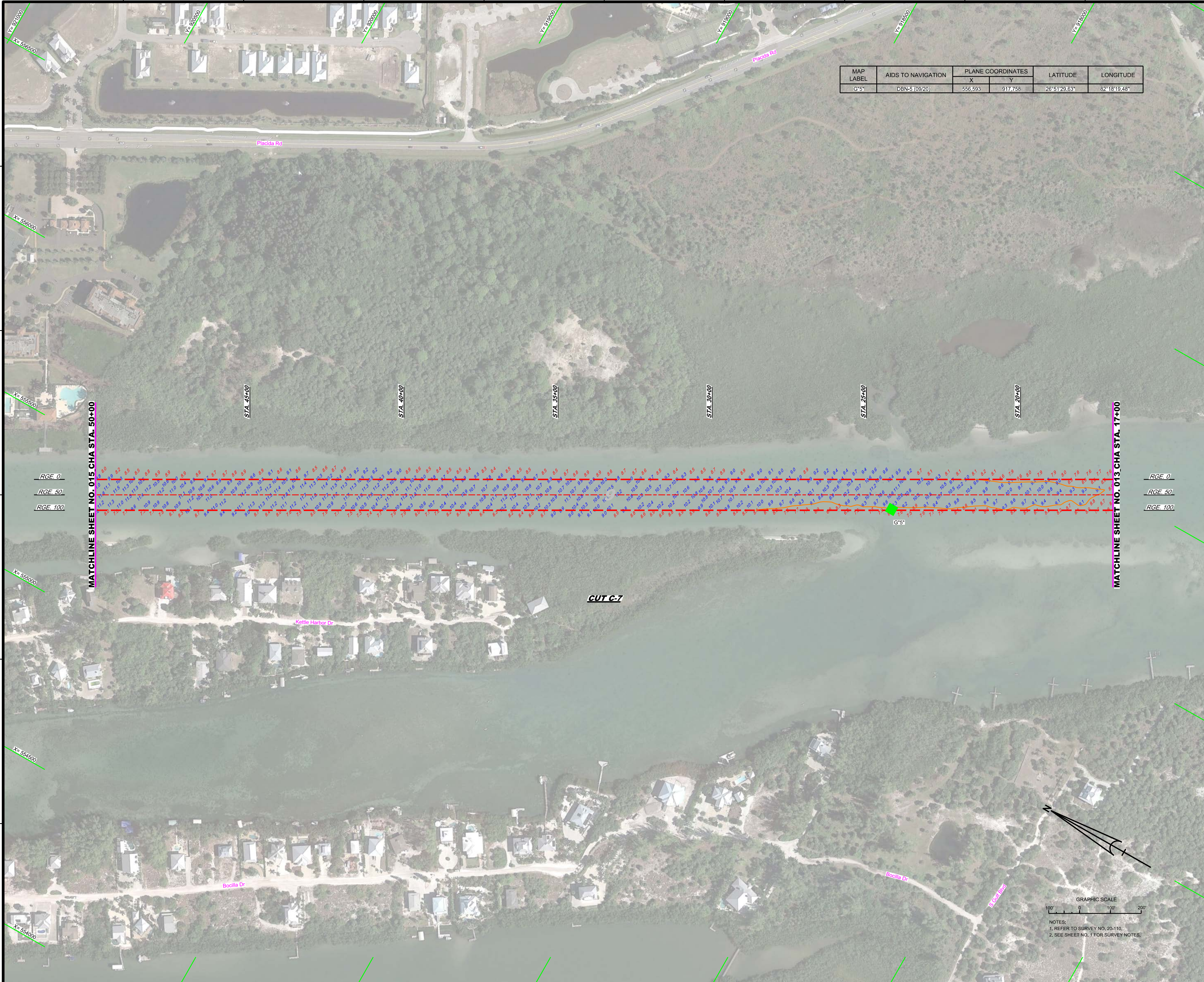
Scale: AS SHOWN  
Drawing no. **13**  
SHEET 13 OF 23




MAP LABEL	AIDS TO NAVIGATION	PLANE COORDINATES		LATITUDE	LONGITUDE
		X	Y		
R-2	DBN-2 (09/20)	558,310	915,421	26°51'06.52"	82°18'00.46"
G-3	LT-3 (09/20)	557,795	915,638	26°51'08.67"	82°18'06.15"
R-4	DBN-4 (09/20)	557,768	915,592	26°51'12.17"	82°18'06.46"

GRAPHIC SCALE  
100' 0 100' 200'

NOTES:  
1. REFER TO SURVEY NO. 20-110.  
2. SEE SHEET NO. 1 FOR SURVEY NOTES.



MAP LABEL	AIDS TO NAVIGATION	PLANE COORDINATES		LATITUDE	LONGITUDE
		X	Y		
G-5	DBN-5 (09/20)	556,593	917,758	26° 51' 29.63"	82° 18' 19.48"



US Army Corps of Engineers  
Jacksonville District  
**SAFETY ON THIS JOB DEPENDS ON YOU**

Rev.	Symbol	Description

Department of the Army  
Jacksonville District, Corps of Engineers  
Jacksonville, Florida

Checked by: GHR
Designed by: WRM
DRAWN BY: WRM
FILE NO: 20-110G-SB-SRIRI_CHA.DGN
DATE: SEP 2020

GULF INTRACASTAL WATERWAY RIVER  
CHARLOTTE COUNTY, FLORIDA

**HYDROGRAPHIC EXAM SURVEY FY20**  
**9-FOOT PROJECT**

STA. 17+00 THRU STA. 50+00 CUT C-7

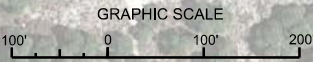
**PLAN**

Scale: AS SHOWN

Drawing no.

14

SHEET 14 OF 23



NOTES:  
1. REFER TO SURVEY NO. 20-110;  
2. SEE SHEET NO. 1 FOR SURVEY NOTES.



MAP LABEL	AIDS TO NAVIGATION	PLANE COORDINATES		LATITUDE	LONGITUDE
		X	Y		
R'8"	DBN-8 (09/20)	553,488	923,409	26°52'25.53"	82°18'53.92"
G'9"	DBN-9 (09/20)	552,745	924,529	26°52'36.60"	82°19'02.16"

US Army Corps of Engineers  
Jacksonville District  
SAFETY ON THIS JOB DEPENDS ON YOU

DATE	BY	REVISION

DEPARTMENT OF THE ARMY  
JACKSONVILLE DISTRICT, CORPS OF ENGINEERS  
JACKSONVILLE, FLORIDA

Checked by: GHR  
Designed by: WRM  
DWG No: 20-110-ANV.DGN  
DWG No: 20-110-CONV.DGN  
DWG No: 20-110-CAVGG2.DGN  
DWG No: 20-110-BS-SRIR\_CHA.DGN  
Reference files: 20-110-ANV01\_CHA.DGN  
Date: 2020  
Date: 2020

XXXXXXXXXXXXXXXXXXXXX.DGN  
20-110-ANV.DGN  
20-110-CONV.DGN  
20-110-CAVGG2.DGN  
20-110-BS-SRIR\_CHA.DGN  
Reference files:  
20-110-ANV01\_CHA.DGN

GULF INTRACOSTAL WATERWAY RIVER  
CHARLOTTE COUNTY, FLORIDA  
**HYDROGRAPHIC EXAM SURVEY FY20  
9-FOOT PROJECT**  
PLAN  
STA. 83+00 THRU STA. 116+00 CUT C7

Scale: AS SHOWN  
Drawing no.  
**16**  
SHEET 16 OF 23

GRAPHIC SCALE  
0 100' 200'

NOTES:  
1. REFER TO SURVEY NO. 20-110.  
2. SEE SHEET NO. 1 FOR SURVEY NOTES.

MATCHLINE SHEET NO. 017 CHA STA. 116+00

MATCHLINE SHEET NO. 015 CHA STA. 83+00

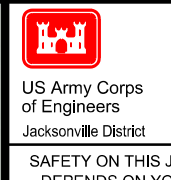
CUT C-7

Palm Island

F  
E  
D  
C  
B  
A

F  
E  
D  
C  
B  
A





US Army Corps of Engineers  
Jacksonville District  
SAFETY ON THIS JOB  
DEPENDS ON YOU

MAP LABEL	AIDS TO NAVIGATION	PLANE COORDINATES		LATITUDE	LONGITUDE
		X	Y		
G*9A*	DBN-9A(09/20)	551,994	925,858	26°52'49.74"	82°19'10.49"
R*10*	DBN-10(09/20)	551,419	927,044	26°53'01.47"	82°19'16.87"
G*11*	L-11(09/20)	551,085	927,376	26°53'04.77"	82°19'20.57"
R*12*	DBN-12(09/20)	551,248	927,716	26°53'08.12"	82°19'18.77"



DEPARTMENT OF THE ARMY  
JACKSONVILLE DISTRICT, CORPS OF ENGINEERS  
JACKSONVILLE, FLORIDA

Checked by: GHR  
 Designed by: WRM  
 Drawn by: WRM  
 File Name: 20-110-00-BS-9R08\_CHA.DGN  
 Date: SEP 2020  
 Reference files: 20-110-00-BS-9R08\_CHA.DGN

GULF INTRACOSTAL WATERWAY RIVER  
 CHARLOTTE COUNTY, FLORIDA  
**HYDROGRAPHIC EXAM SURVEY FY20**  
**9-FOOT PROJECT**  
 STA. 116+00 CUT-7 THRU STA. 15+00 CUT C-8  
**PLAN**

GRAPHIC SCALE  
 100' 0 100' 200'  
 NOTES:  
 1. REFER TO SURVEY NO. 20-110.  
 2. SEE SHEET NO. 1 FOR SURVEY NOTES.

Scale: AS SHOWN  
 Drawing no.  
**17**  
 SHEET 17 OF 23



<p>US Army Corps of Engineers Jacksonville District</p> <p>SAFETY ON THIS JOB DEPENDS ON YOU</p>		

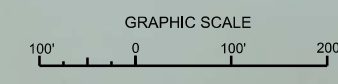
DEPARTMENT OF THE ARMY  
JACKSONVILLE DISTRICT, CORPS OF ENGINEERS  
JACKSONVILLE, FLORIDA

Checked By:	GHR
Designed By:	WRM
Drawn By:	WRM
File No.:	20-110-05-BB-SRIR_CHA.DGN
Date:	SEP 2020

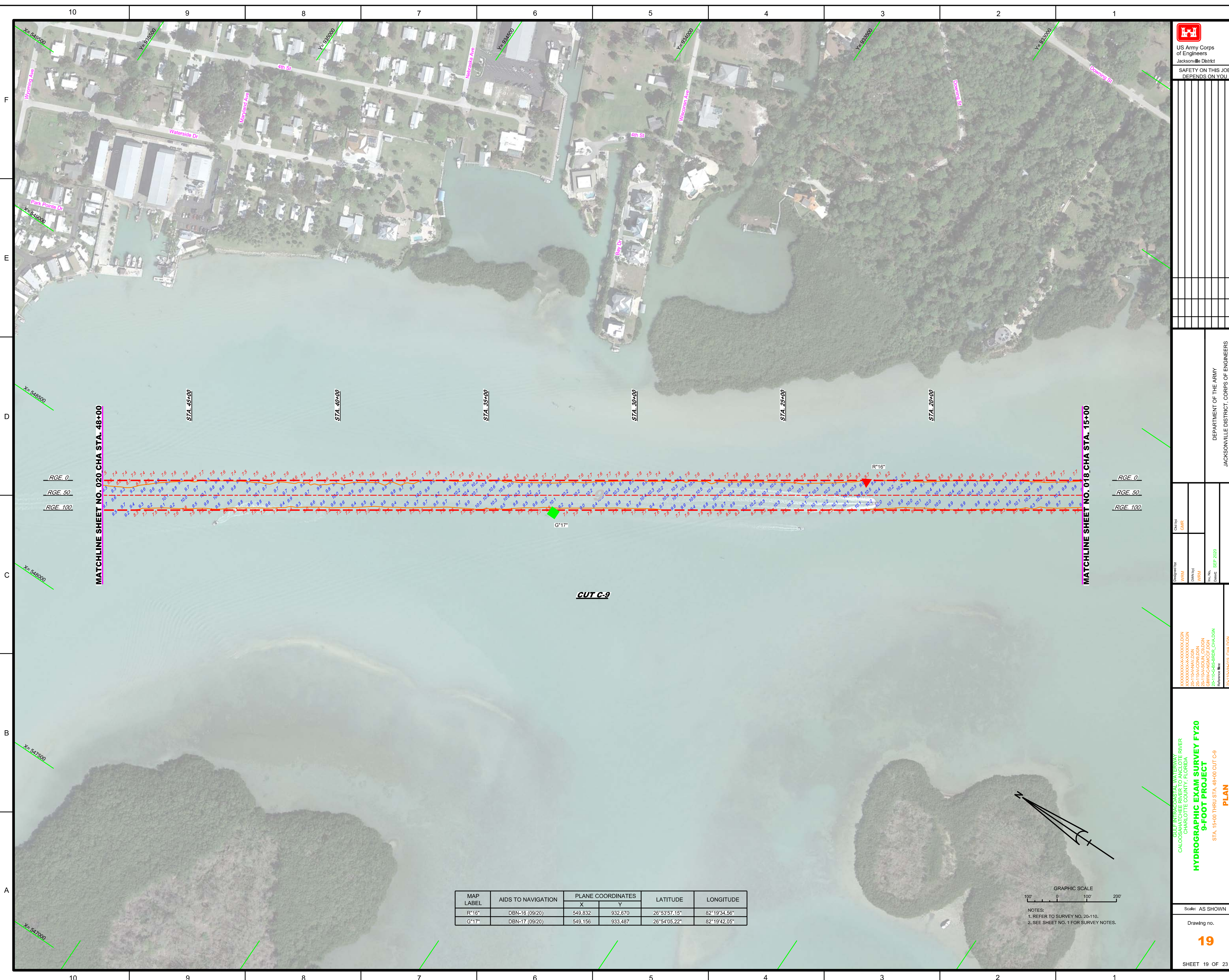
XXXXXXXXXXXXXXXXXXXX.DGN
20-110-05-000A_CAD.DGN
20-110-05-000A_CAD.DGN
20-110-05-000A_CAD.DGN
20-110-05-000A_CAD.DGN
20-110-05-000A_CAD.DGN
20-110-05-000A_CAD.DGN
20-110-05-000A_CAD.DGN

GULF INTRACOSTAL WATERWAY  
CHARLOTTE COUNTY, FLORIDA  
**HYDROGRAPHIC EXAM SURVEY FY20**  
**9-FOOT PROJECT**  
STA. 15+00 CUT-8 THRU STA. 15+00 CUT C-8  
**PLAN**

MAP LABEL	AIDS TO NAVIGATION	PLANE COORDINATES		LATITUDE	LONGITUDE
		X	Y		
G*13*	DBN-13 (09/20)	550,969	930,394	26°53'34.63"	82°19'21.93"
R*14*	LT-14 (09/20)	551,107	930,817	26°53'38.83"	82°19'20.42"
G*15*	DBN-15 (09/20)	550,664	931,263	26°53'43.23"	82°19'25.33"



NOTES:  
1. REFER TO SURVEY NO. 20-110.  
2. SEE SHEET NO. 1 FOR SURVEY NOTES.



US Army Corps of Engineers  
Jacksonville District  
SAFETY ON THIS JOB  
DEPENDS ON YOU

No.	Symbol	Zone

DEPARTMENT OF THE ARMY  
JACKSONVILLE DISTRICT, CORPS OF ENGINEERS  
JACKSONVILLE, FLORIDA

Checked by: GHR  
Designed by: WRM  
Drawn by: WRM  
File No: 20-110A-HR1-L-CHA.DGN  
Date: SEP 2020

XXXXXXXXXXXXXXXXXXXX.DGN  
20-110A-HR1-L-CHA.DGN  
20-110A-HR1-L-CHA.DGN  
20-110A-HR1-L-CHA.DGN  
20-110A-HR1-L-CHA.DGN  
Reference files:  
20-110A-HR1-L-CHA.DGN

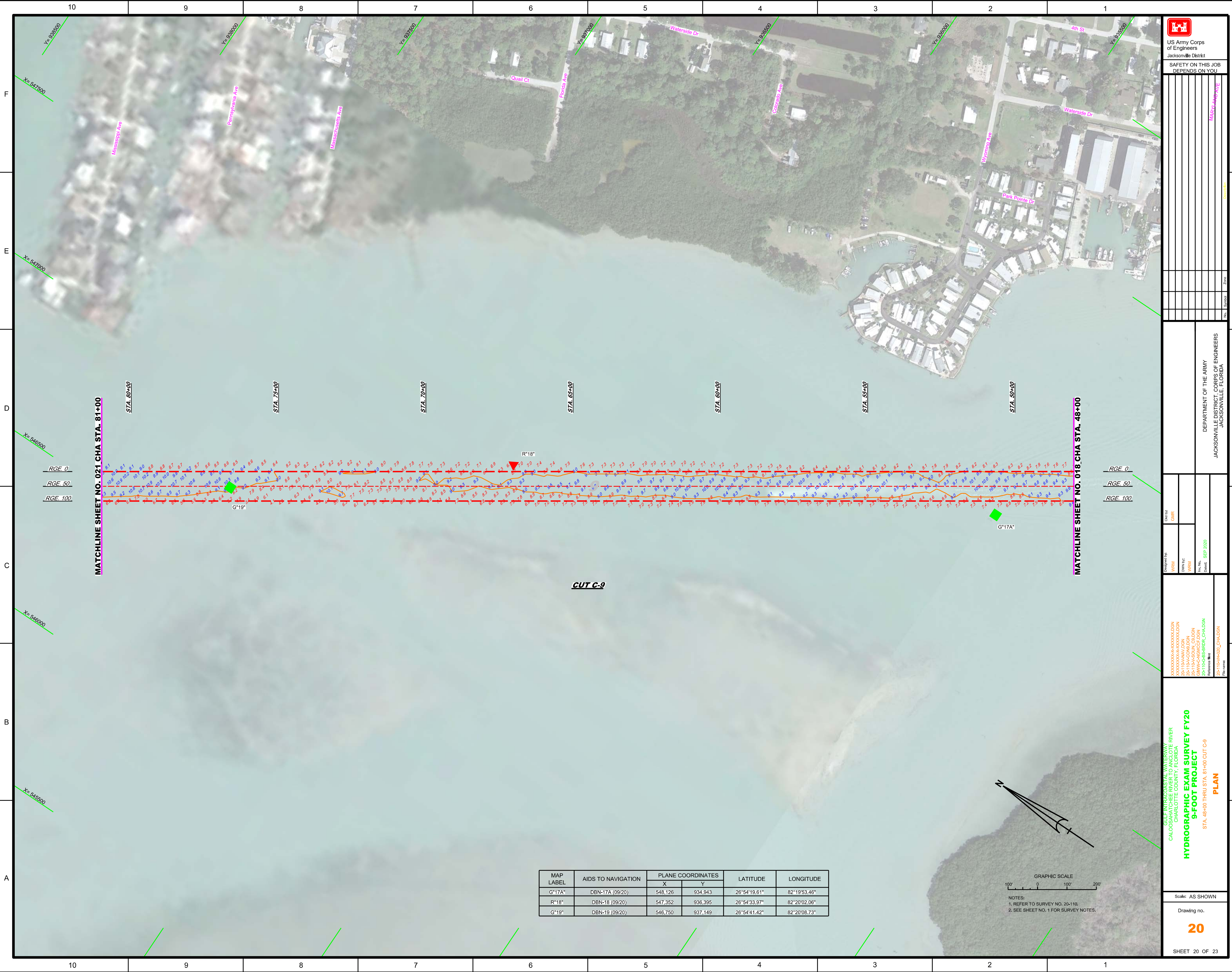
GULF INTRACOASTAL WATERWAY  
CALOOCHEE RIVER  
CHARLOTTE COUNTY, FLORIDA  
**HYDROGRAPHIC EXAM SURVEY FY20**  
**9-FOOT PROJECT**  
PLAN  
STA. 15+00 THRU STA. 48+00 CUT C-9


Scale: AS SHOWN  
Drawing no. **19**  
SHEET 19 OF 23

MAP LABEL	AIDS TO NAVIGATION	PLANE COORDINATES		LATITUDE	LONGITUDE
		X	Y		
R*16"	DBN-16 (09/20)	549.832	932.670	26°53'57.15"	82°19'34.56"
G*17"	DBN-17 (09/20)	549.156	933.487	26°54'05.22"	82°19'42.05"



NOTES:  
1. REFER TO SURVEY NO. 20-110.  
2. SEE SHEET NO. 1 FOR SURVEY NOTES.



  
 US Army Corps of Engineers  
 Jacksonville District  
 SAFETY ON THIS JOB  
 DEPENDS ON YOU

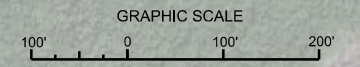
DEPARTMENT OF THE ARMY  
 JACKSONVILLE DISTRICT, CORPS OF ENGINEERS  
 JACKSONVILLE, FLORIDA

Check By: GHR  
 Designed By: WRM  
 Drawn By: WRM  
 File No.: 20-110A-WAY-DGN  
 Date: SEP 2020  
 Reference File: 20-110A-WAY-DGN

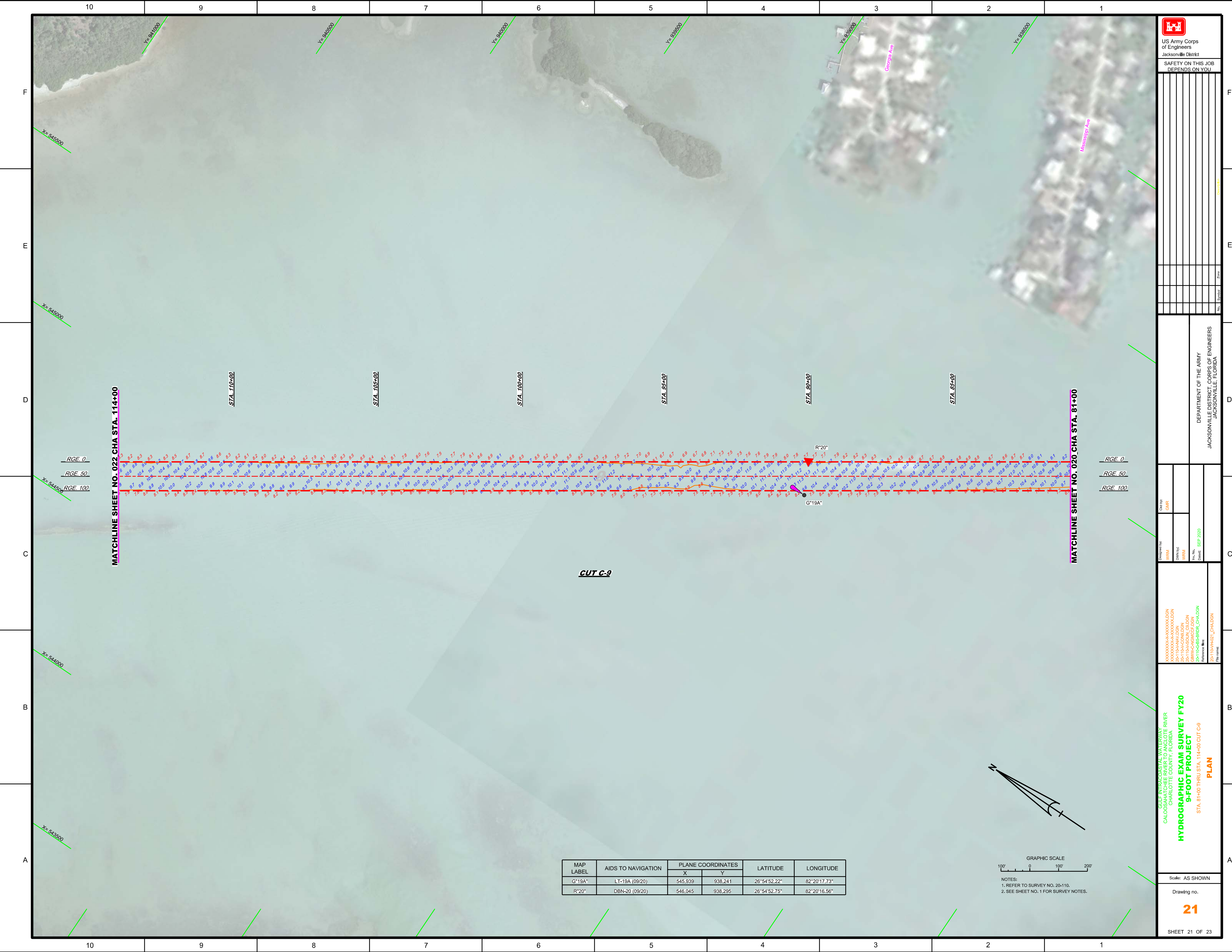
GULF INTRACASTAL WATERWAY RIVER  
 CHARLOTTE COUNTY, FLORIDA  
**HYDROGRAPHIC EXAM SURVEY FY20**  
**9-FOOT PROJECT**  
 STA. 48+00 THRU STA. 81+00 CUT C-9  
**PLAN**

Scale: AS SHOWN  
 Drawing no.  
**20**  
 SHEET 20 OF 23

MAP LABEL	AIDS TO NAVIGATION	PLANE COORDINATES		LATITUDE	LONGITUDE
		X	Y		
G*17A	DBN-17A (09/20)	548,126	934,943	26°54'19.61"	82°19'53.46"
R*18	DBN-18 (09/20)	547,352	936,395	26°54'33.97"	82°20'02.06"
G*19	DBN-19 (09/20)	546,750	937,149	26°54'41.42"	82°20'08.73"



NOTES:  
 1. REFER TO SURVEY NO. 20-110.  
 2. SEE SHEET NO. 1 FOR SURVEY NOTES.



NO.	SYMBOL	ZONE

DEPARTMENT OF THE ARMY  
 JACKSONVILLE DISTRICT, CORPS OF ENGINEERS  
 JACKSONVILLE, FLORIDA

Checked by: GHR  
 Designed by: WRM  
 Drawn by: WRM  
 Date: 09/20/20  
 Date: 09/20/20

XXXXXXXXXXXXXXXXXXXX.DGN  
 20-110A-WA-DGN  
 20-110A-CO-DGN  
 20-110A-GW-DGN  
 20-110A-SB-DGN  
 Reference files:  
 20-110A-HA2\_L\_CHA.DGN  
 20-110A-HA2\_C\_CHA.DGN

GULF INTRACOSTAL WATERWAY RIVER  
 CHARLOTTE COUNTY, FLORIDA

**HYDROGRAPHIC EXAM SURVEY FY20  
 9-FOOT PROJECT**

STA. 81+00 THRU STA. 114+00 CUT C-9

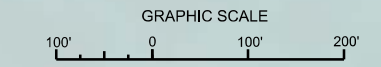
**PLAN**

Scale: AS SHOWN

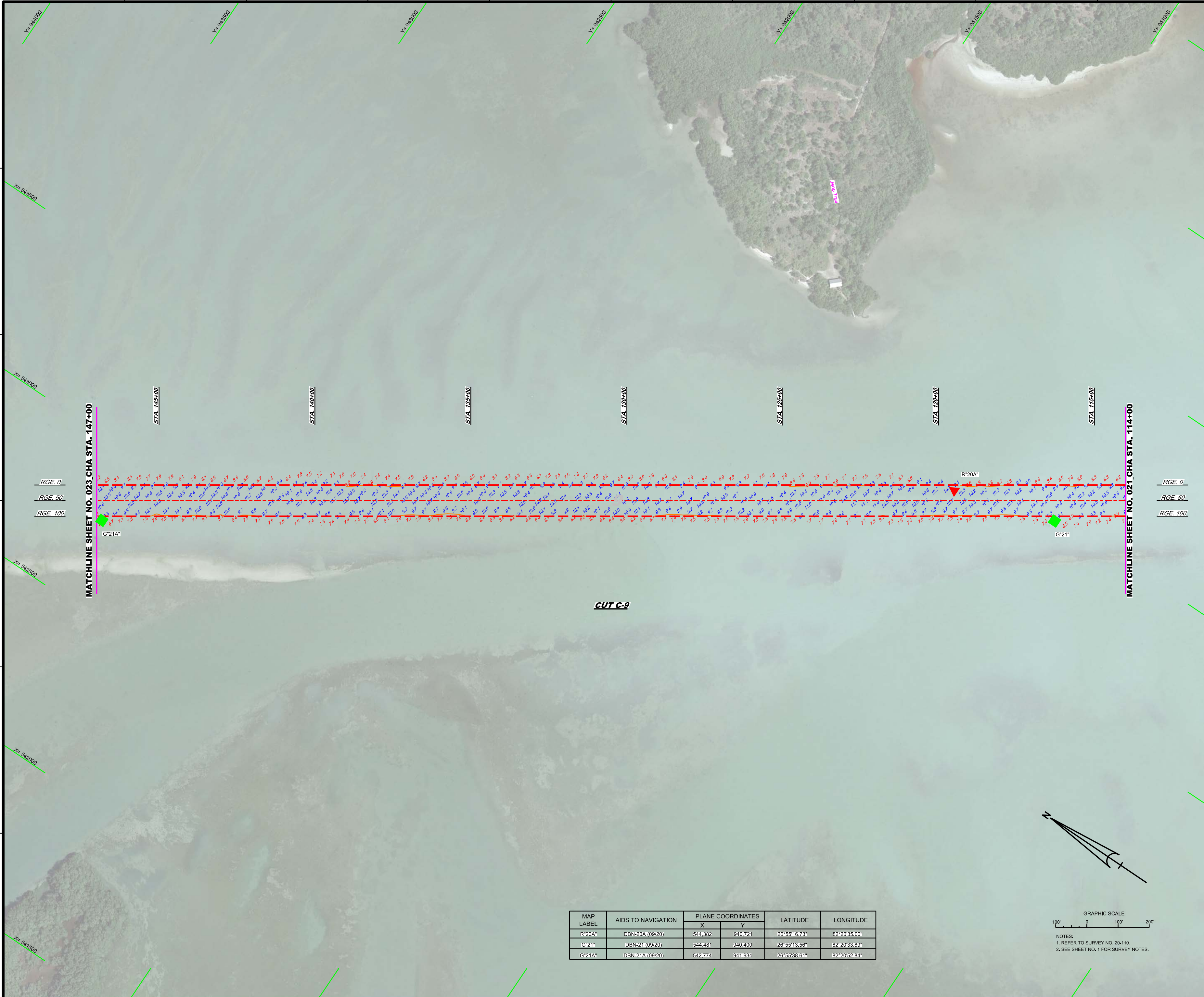
Drawing no.  
**21**

SHEET 21 OF 23

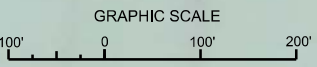
MAP LABEL	AIDS TO NAVIGATION	PLANE COORDINATES		LATITUDE	LONGITUDE
		X	Y		
G*19A*	LT-19A (09/20)	545,939	938,241	26°54'52.22"	82°20'17.73"
R*20*	DBN-20 (09/20)	546,045	938,295	26°54'52.75"	82°20'16.56"



NOTES:  
 1. REFER TO SURVEY NO. 20-110.  
 2. SEE SHEET NO. 1 FOR SURVEY NOTES.



MAP LABEL	AIDS TO NAVIGATION	PLANE COORDINATES		LATITUDE	LONGITUDE
		X	Y		
R^20A*	DBN-20A (09/20)	544,382	940,721	26°55'18.73"	82°20'35.00"
G^21A*	DBN-21 (09/20)	544,481	940,400	26°55'13.56"	82°20'33.89"
G^21A*	DBN-21A (09/20)	542,774	941,934	26°55'38.61"	82°20'52.84"



NOTES:  
1. REFER TO SURVEY NO. 20-110.  
2. SEE SHEET NO. 1 FOR SURVEY NOTES.

US Army Corps of Engineers  
Jacksonville District  
SAFETY ON THIS JOB DEPENDS ON YOU

No.	Symbol	Zone

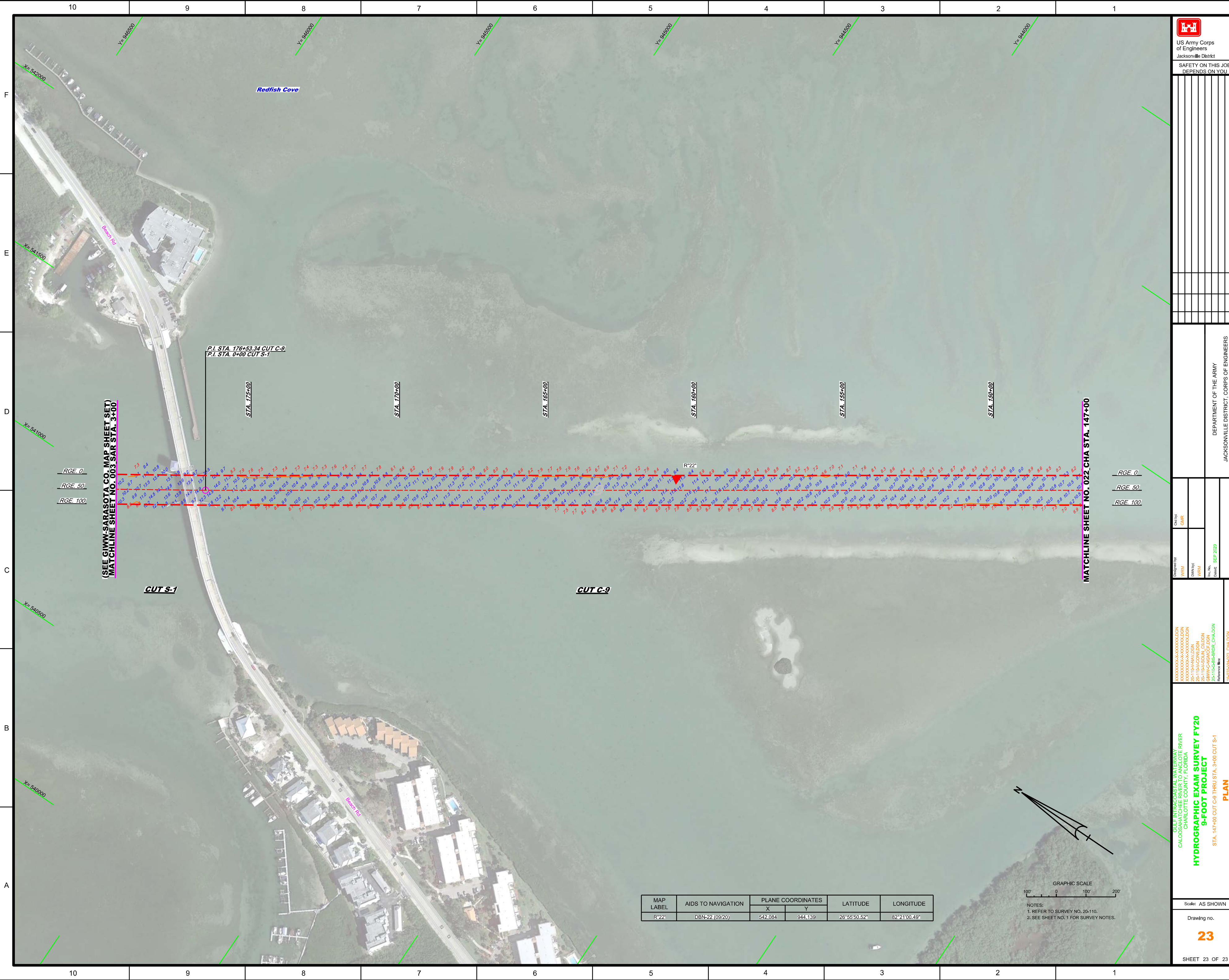
Designed by: WRM, DWN, WRM  
 Checked by: GHR  
 Date: SEP 2020

\XXXXXXXXXXXXXXXXXX\CDON\20-110-ANV.DGN  
 \XXXXXXXXXXXXXXXXXX\CDON\20-110-CON.DGN  
 \XXXXXXXXXXXXXXXXXX\CDON\20-110-CUT.DGN  
 \XXXXXXXXXXXXXXXXXX\CDON\20-110-GS-SRIR\_CHA.DGN  
 \XXXXXXXXXXXXXXXXXX\CDON\20-110-HAZZ\_CHA.DGN

GULF INTRACOSTAL WATERWAY  
 CHARLOTTE COUNTY, FLORIDA  
 HYDROGRAPHIC EXAM SURVEY FY20  
 9-FOOT PROJECT  
 STA. 114+00 THRU STA. 147+00 CUT C-9  
**PLAN**

Scale: AS SHOWN  
Drawing no. **22**  
SHEET 22 OF 23

DEPARTMENT OF THE ARMY  
JACKSONVILLE DISTRICT, CORPS OF ENGINEERS  
JACKSONVILLE, FLORIDA



(SEE GIWW-SARASOTA CO. MAP SHEET SET)  
 MATCHLINE SHEET NO. 003 SAR STA. 3+00

MATCHLINE SHEET NO. 022 CHA STA. 147+00

P.I. STA. 176+53.34 CUT C-9  
 P.I. STA. 0+00 CUT S-1

STA. 175+00

STA. 170+00

STA. 165+00

STA. 160+00

STA. 155+00

STA. 150+00

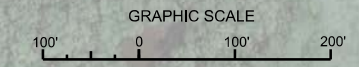
RGE 0  
 RGE 50  
 RGE 100

RGE 0  
 RGE 50  
 RGE 100

CUT S-1

CUT C-9

MAP LABEL	AIDS TO NAVIGATION	PLANE COORDINATES		LATITUDE	LONGITUDE
		X	Y		
R221	DBN-22 (09/20)	542,084	944,139	26°55'50.52"	82°21'00.49"



NOTES:  
 1. REFER TO SURVEY NO. 20-110.  
 2. SEE SHEET NO. 1 FOR SURVEY NOTES.

US Army Corps  
 of Engineers  
 Jacksonville District

SAFETY ON THIS JOB  
 DEPENDS ON YOU

DESIGNED BY: WRM, WRM  
 DRAWN BY: WRM, WRM  
 FILE NO.: 20-110-CON-126  
 DATE: 09/20/20

Check by: GMR  
 Date: 09/20/20

XXXXXXXXXXXXXXXXXXXX.DGN  
 XXXXXXXXXXXXXXXXXXXX.DGN  
 XXXXXXXXXXXXXXXXXXXX.DGN  
 XXXXXXXXXXXXXXXXXXXX.DGN  
 XXXXXXXXXXXXXXXXXXXX.DGN  
 XXXXXXXXXXXXXXXXXXXX.DGN  
 XXXXXXXXXXXXXXXXXXXX.DGN  
 XXXXXXXXXXXXXXXXXXXX.DGN  
 XXXXXXXXXXXXXXXXXXXX.DGN  
 XXXXXXXXXXXXXXXXXXXX.DGN  
 XXXXXXXXXXXXXXXXXXXX.DGN  
 XXXXXXXXXXXXXXXXXXXX.DGN  
 XXXXXXXXXXXXXXXXXXXX.DGN  
 XXXXXXXXXXXXXXXXXXXX.DGN

DEPARTMENT OF THE ARMY  
 JACKSONVILLE DISTRICT, CORPS OF ENGINEERS  
 JACKSONVILLE, FLORIDA

GULF INTRACOSTAL WATERWAY  
 CHARLOTTE COUNTY, FLORIDA  
**HYDROGRAPHIC EXAM SURVEY FY20**  
**9-FOOT PROJECT**

Plan Name: 16-053-1422\_CHA.DGN

Scale: AS SHOWN

Drawing no.

**23**

SHEET 23 OF 23